



private and confidential

Waverley Wind Farm

A presentation prepared for discussion
at the 2008 Dunes Conference
Friday 7 March 08

partnership / determination / ingenuity

Infrastructure | 




THE WIND FARM

Where is it?





The Site -



Size:

- Approximately 435ha in size.
- Split into the Eastern block (180ha)
- And the Western block (255ha)

Uses:


- From 1971-1987, the whole wind farm area was used for ironsand mining = The Waipipi Ironsands Operation
- The current land use is pastoral.

The Site





Proposed Wind Farm Statistics



- EXISTING
 - 2 Temporary monitoring towers on site, each 60m tall
- PROPOSED
 - 45 turbines
 - 105m to nacelle
 - 45m blade length
 - Total height 150m
 - 3MW machines
 - 135MW total wind farm size
 - Will provide enough electricity to power 56,250 homes

How Was Everything Decided?



- Lots of consultation – neighbours, locals, government bodies etc.
- Extensive research work – ecological, archaeological, civil, traffic, noise, cultural, landscape and visual, construction, etc.
- Site constraints established, and then fed into the planning of the turbine layout.

Constraints Map



Where are we at now?



- Resource Consent Application document was lodged with the district council last year.
- Submissions have been received.
- Still awaiting on council to complete their report and provide a hearing date.

HOW I CAME TO BE HERE TODAY



The Situation.....



Landowner:

Has 'sand blowout' occurring on their property.

Department of Conservation:

Have 'moving' sand dunes, and a landowner in regular touch with them.

Waverley Wind Farm Ltd:

Propose to potentially have up to 80,000 m³ excavated material to relocate.

The Solution.....



Excavated sand be relocated to the landowners 'sand blowout' area.

Sand dunes be created and planted in natives in order to blend in with the existing area (with guidance from specialists in the sand dune field).

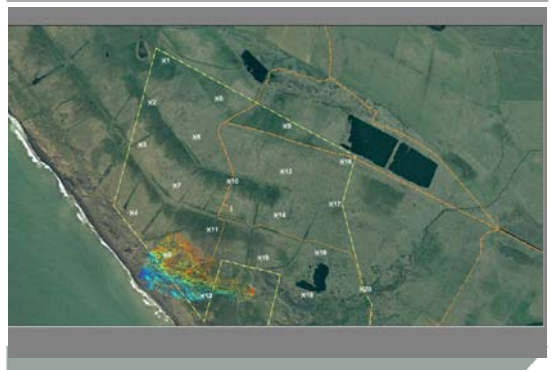
The Result.....

Everyone is happy as each of their 'issues' have been resolved. A favourable outcome results for all.

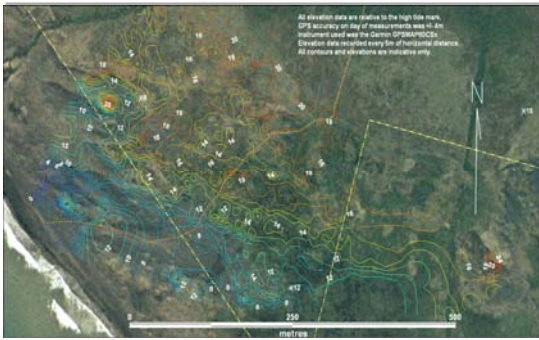
The Location?



Proposed Sand Dune Area



Proposed Sand Dune Area Contours



Aerial Photo of Area



2008 Aerial Photo of Area



Photomontage, Waverley Beach Lookout Towards Wind Farm



PHOTOMONTAGE SEA WAVERLEY BEACH LOOKOUT

WAVELEY BEACH LOOKOUT, WAVERLEY BEACH, SOUTH AUSTRALIA. PHOTOGRAPHED BY ALLCO. PHOTO MONTAGE BY ALLCO.

PHOTOMONTAGE SEA WAVERLEY BEACH LOOKOUT

WAVELEY BEACH LOOKOUT, WAVERLEY BEACH, SOUTH AUSTRALIA. PHOTOGRAPHED BY ALLCO. PHOTO MONTAGE BY ALLCO.



Photomontage, Patea Beach Towards Wind Farm



PHOTOMONTAGE TA PATEA BEACH LOOKOUT LOOKING EASTWARDS

PROPOSED VIEW

ALLCO is not responsible for any errors or omissions in this document. The information is provided for general information only and should not be relied upon for any specific purpose.



Site visit.....coming soon!



When on site, please remember to be aware that you are on a working farm. You will need to;

- Shut gates
- Stay away from stock
- Stay out of monitoring tower fenced off area
- Treat all fences as 'live' unless you need a **BUZZ!**
- Watch out for half buried fences and their associated fence wire (aka trip lines!)
- Stay within the general area being visited
- Make sure you don't get left behind!