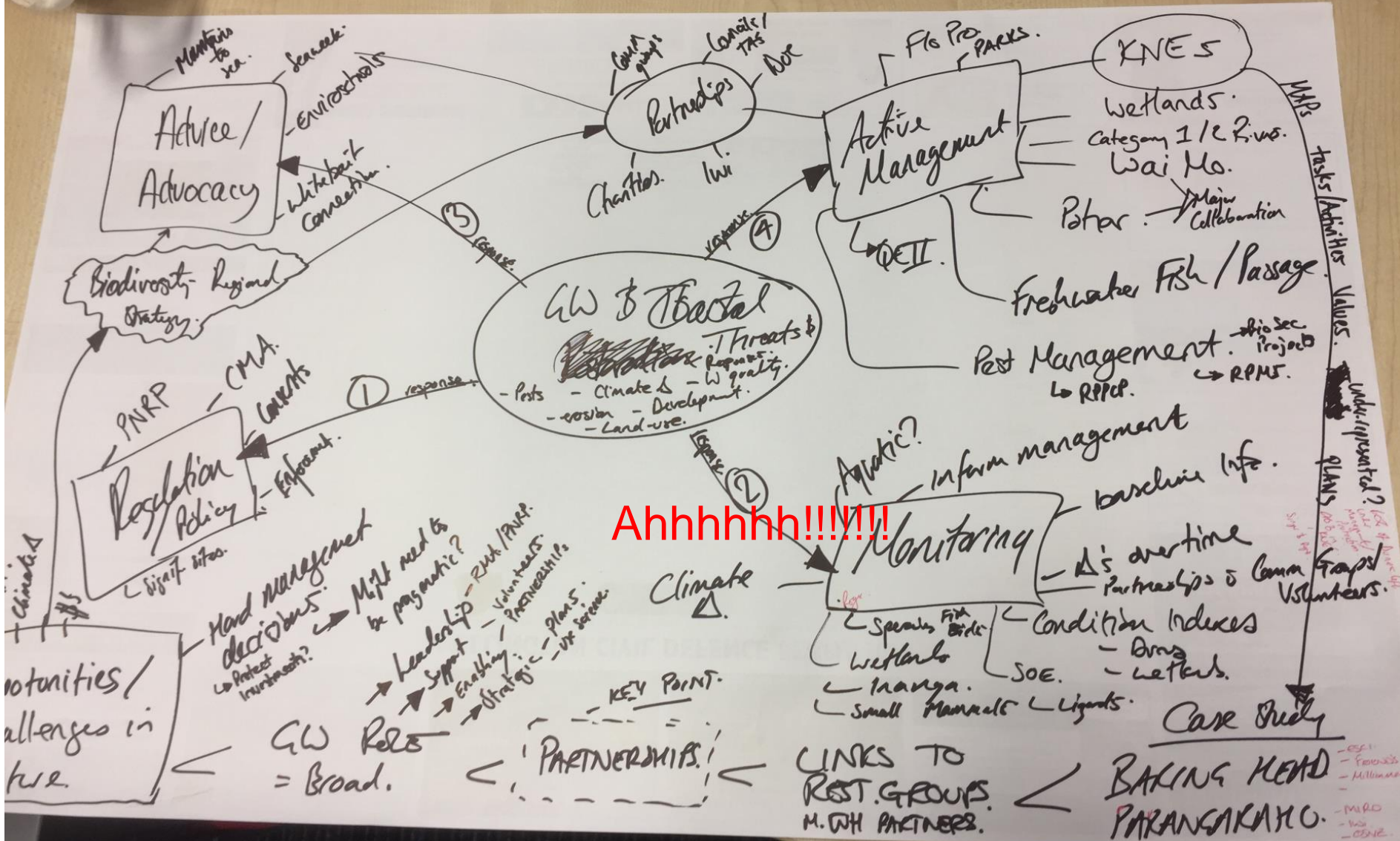




# Greater Wellington & the coast

A threats and responses story



Ahhhhhh!!!!!!

# Threats



- 
1. Policy/Regulation
  2. Advice/Advocacy
  3. Monitoring
  4. Management

# 1. Policy/Regulation



# 2. Advocacy/ Advice



# 3. Monitoring



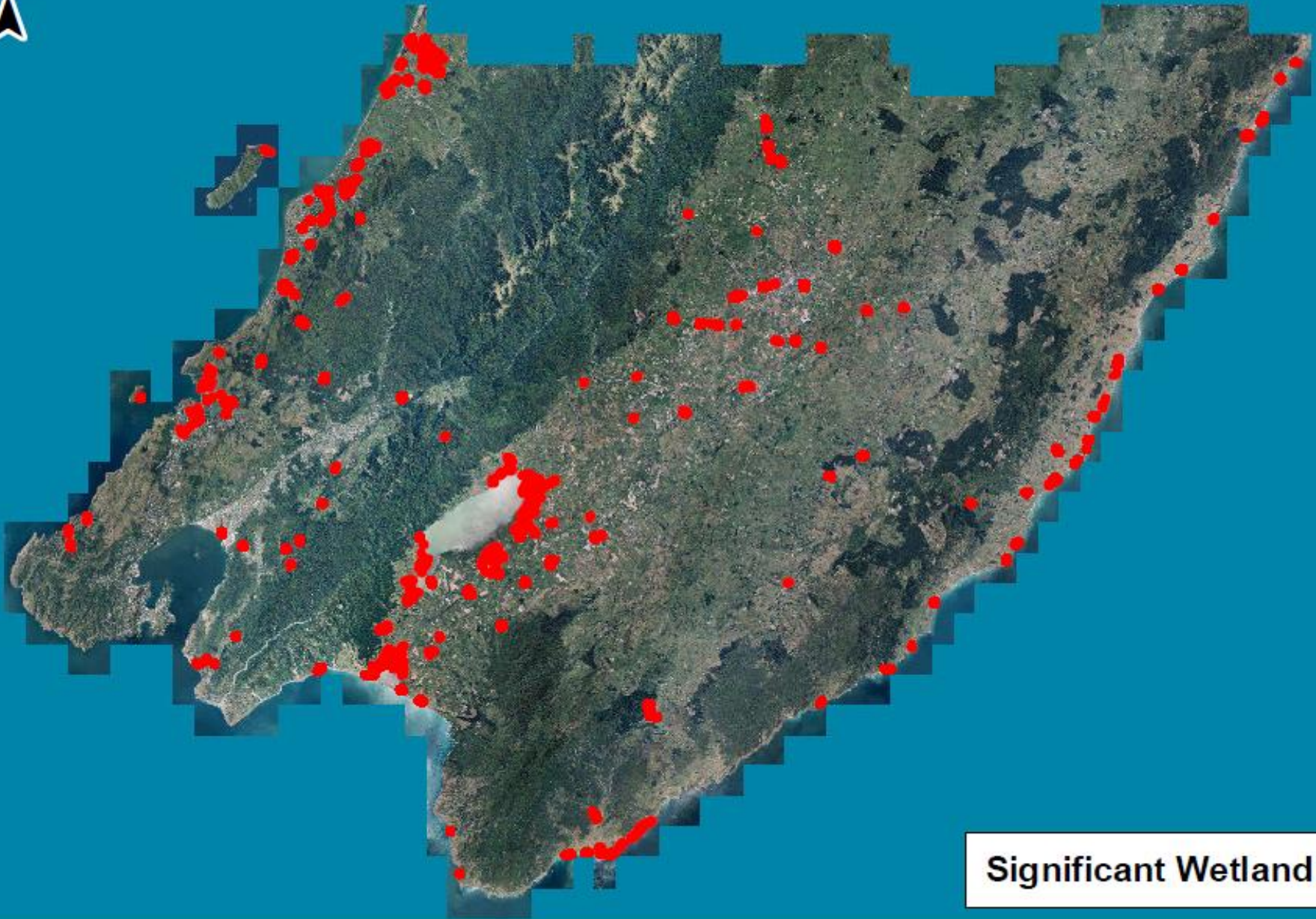
# 4. Management





# Management programmes

- Key Native Ecosystems programme
- Wetland programme
- Te Awarua o Porirua Harbour and Catchment Project
- QEII Covenant Support programme
- Freshwater Fish programme

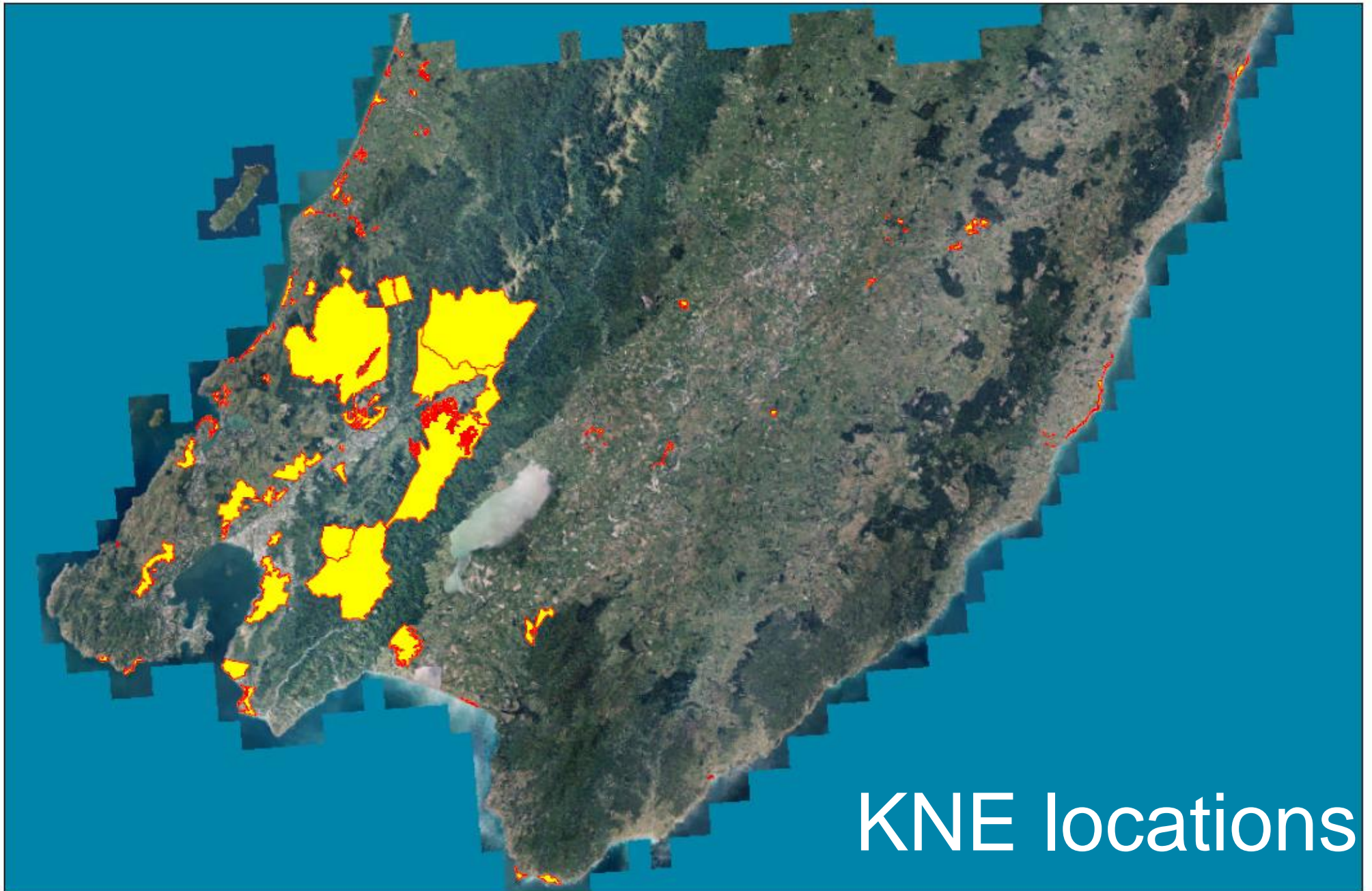


**Significant Wetland Sites**

# Key Native Ecosystem programme



- Areas with high biodiversity value (different ecosystems) prioritised for management
- 3 year operational plans prepared for KNE sites
- Wide range of pest animal and plant species are targeted using a variety of control methods
- Territorial authorities, private landowners and volunteers



KNE locations

# Parangarahu Lakes Area



## Parangarahu Lakes Area Co-Management Plan

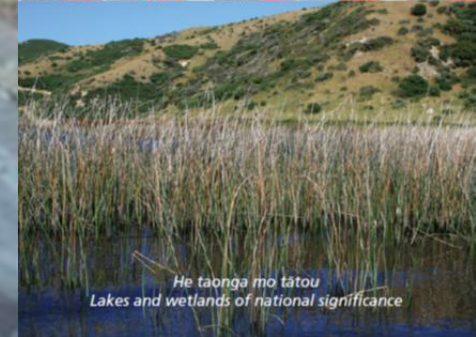
and amendment to the GWRC Parks Network Plan



PORT NICHOLSON BLOCK



greater WELLINGTON  
REGIONAL COUNCIL  
Te Hōu Whānau Te Rau



*He taonga mo tātou  
Lakes and wetlands of national significance*



greater WELLINGTON  
REGIONAL COUNCIL  
Te Pane Matua Taiao



# Baring Head/Ōrua-pouanui



# What do we hope for

- Connected, healthy, diverse and resilient KNE sites.





# What challenges remain?

- Threats still remain!
- Climate change
- Hard management decisions
  - Opportunities?





Thank you

