

An aerial photograph of a coastal landscape. In the foreground, a river flows through green fields towards a sandy beach. The beach curves along a bay with turquoise water. In the background, there are rolling green hills and distant mountains under a cloudy sky. The text 'The Uawanui Project' is overlaid in the center in a large, white, sans-serif font.

The Uawanui Project

A Community Vision for Sustainability

How did it come about?

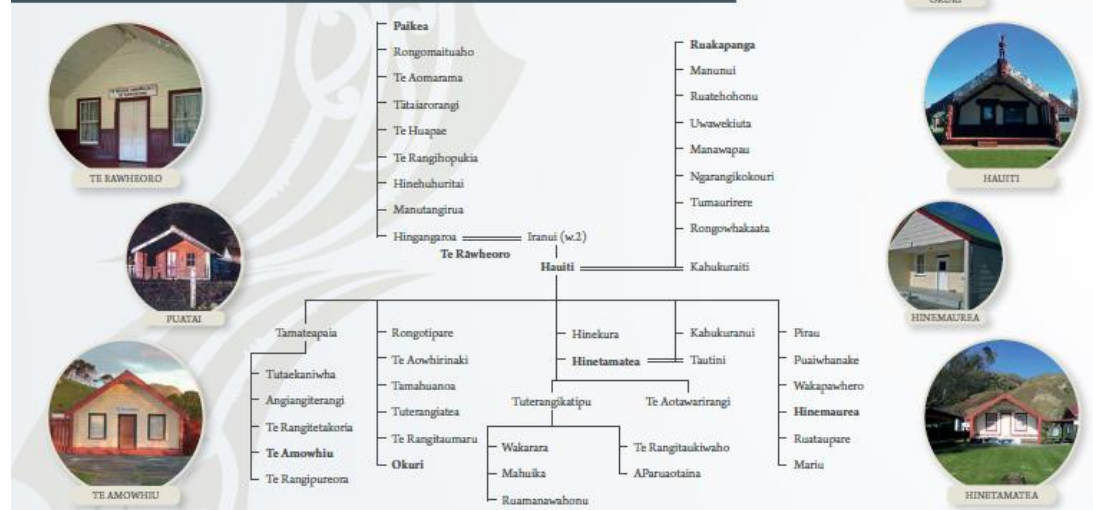
- School / Community seeking assistance with environmental restoration
- Desire for:
 - Restoration at a meaningful – catchment scale
 - Combined environmental, economic, cultural restoration
- Te Aitanga a Hauiti
- Allan Wilson Centre & Groundtruth
 - Independent science and practical project development.
- Development of Uawanui Vision

Fundamental role of Iwi – Te Aitanga a Hauiti

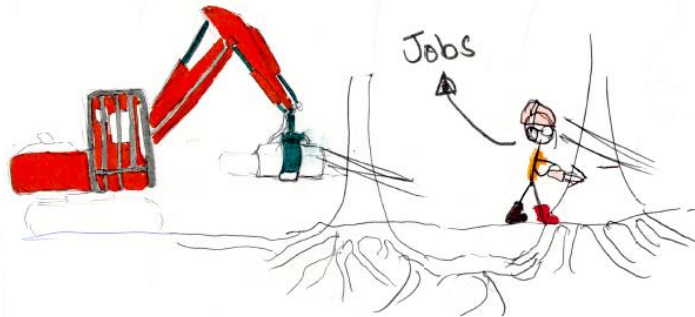
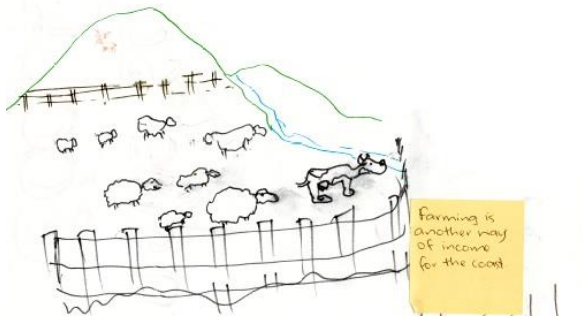


- Connection
- Long term ownership
- Underlying values – kaitiakitanga
- World view – interconnectedness, mauri (life force)

THE UAWANUI PROJECT HEI TAHU WHAKAPAPA



Whole community



Keep the marae in good condition

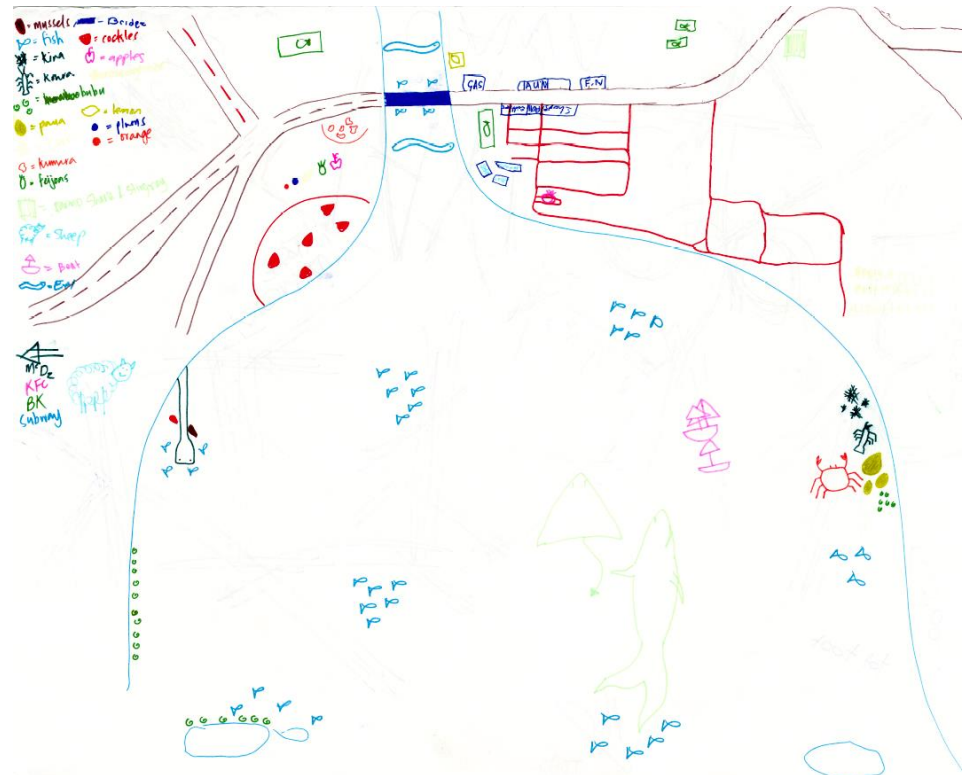
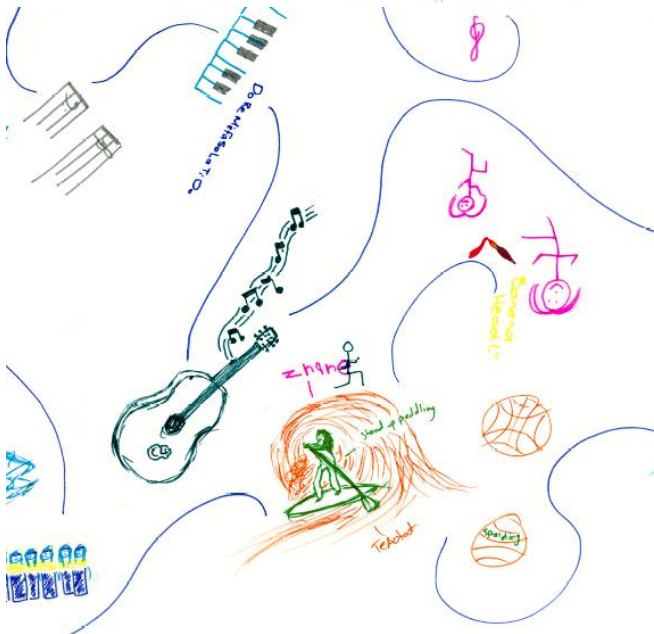


- Pine trees with a mixture of native for animals to live in.

The forestry provides for animals

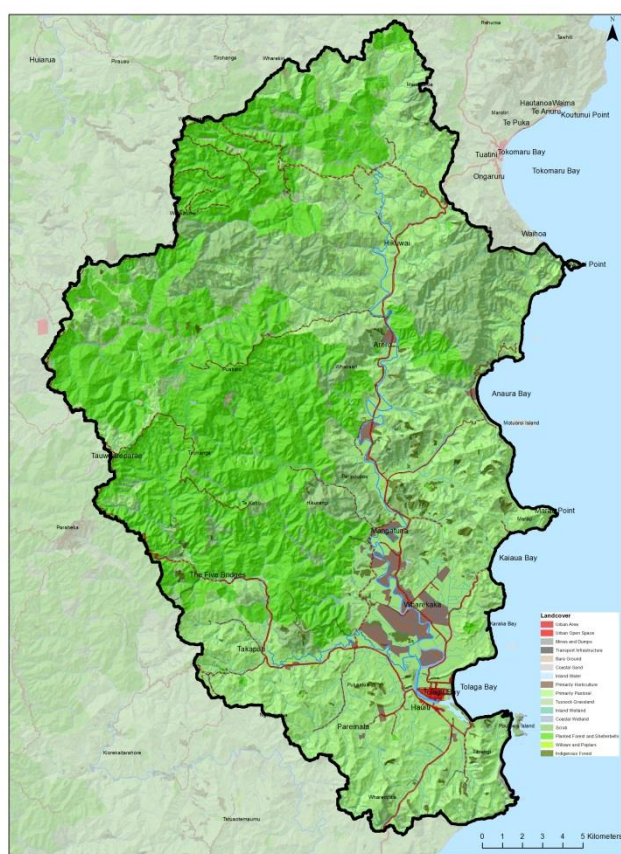
Forest good for animals

PIG HUNTING

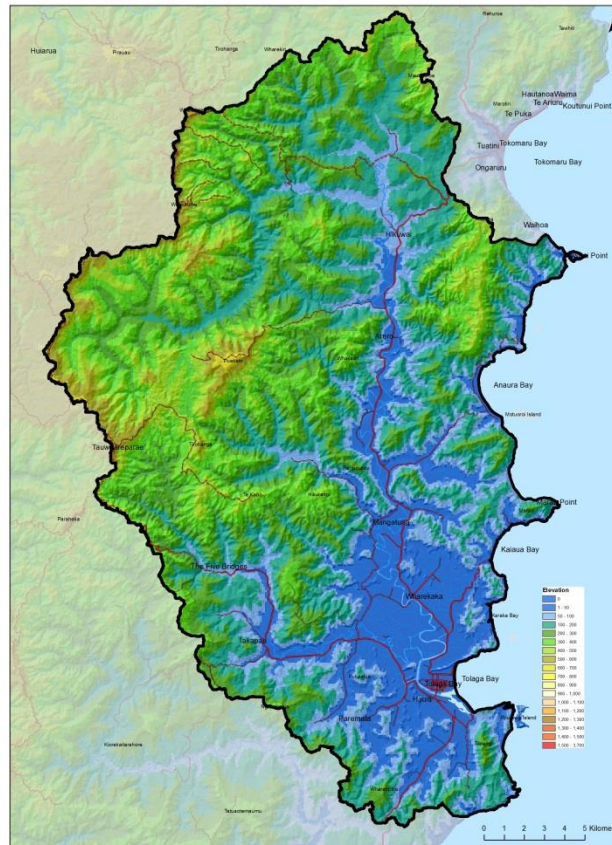


Understanding resources...

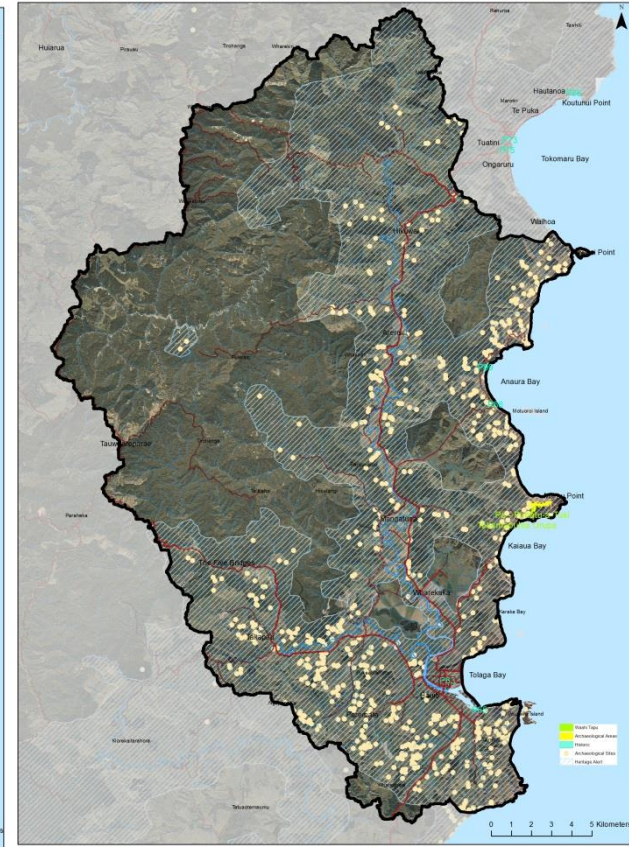
Natural and human landscape scale has to make sense



Landcover



Elevation



Archaeology and Waahi Tapu

Key Points

- Iwi and Community
- Dual Heritage – Shared Future
- Environmental, economic and cultural restoration
- A shared vision and landmarks that guide our waka toward it
 - If we line up these points - we will get there

Uawanui Project

Keeping connection

The big picture

- Vision poster
- Uawanui booklet

Landmarks that guide us



Action on ground

Early projects include:

- Kaitawa Estuary restoration
- School riverbank
- Riverbank guide
- Inanga
- Weed control
- Education and research
- Sustainable land management

He Manawa Whenua – He Oranga Tangata

Healthy Environment - Healthy People

Steep and unstable parts of the upper catchment are protected by plantation and native forests that reduce erosion and provide healthy water sources

Nature is valued throughout Uawa and is woven through the landscape as a network of habitat areas, linkages and supportive agriculture and forestry production systems

Land is used wisely, with long term sustainable production matched to soils, erosion and underlying land capability

The high quality natural environment and cultural heritage of Uawa are key to our identity and are managed to retain their value

We undertake life- long learning to provide a well educated, thoughtful, creative and motivated people who manage our land, water and coastal resources wisely and innovate to generate on-going prosperity



We utilise our own knowledge and relationships but also foster external links to science, innovation and markets to generate prosperity for the community

Understanding, dialogue, building relationships and collaboration bind together a strong Uawa community and extend its network nationally and internationally

The health of people is supported by their access to clean water, high quality local food and healthy lifestyle

Everyone who lives and works in the catchment is acknowledged for their role in enhancing the health of the environment and downstream water quality

There are profitable businesses that are stable and resilient, providing long term economic benefit to their owners and the whole community

We celebrate our dual heritage and share a future that builds on the values and strengths of our different cultures

