

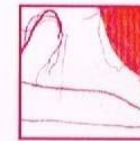
# Castlecliff Coast Care (part of Progress Castlecliff, Whanganui)



# Apology from Graham



23



**RE\*PURPOSE = RE\*LIFE**

**Whanganui Resource Recovery Centre, 83 Maria Place Ext.**  
027 222 8378 | [pearsongandl@clear.net.nz](mailto:pearsongandl@clear.net.nz) | [sustainablewhanganui.org.nz](http://sustainablewhanganui.org.nz)

Discover work by diverse artists who share a passion for repurposing and recycling materials, including timber and metal. Formally trained artists and skilled artisans bring you sculpture, installation and mixed media art. Take a fresh look at every-day objects! Visit our website for more details.

# Home of Big Dunes & real Driftwood, wattle & marram grass





Duncan Pavilion, beginning of 1<sup>st</sup> transit line on swimming beach which continues to be cleared & behind the fore dunes disappearing into wattle forest along transit line.



# 2017 – Invertebrate Study with three tertiary Students for 6 weeks plus entomologist Rudi



Department of Conservation  
 Te Papa Ataturu  
**Castlecliff Planting Areas**  
 February 2012

0 10 20 40 60 80  
 Metres

Map by Geographix  
 Te Papa Ataturu  
 Department of Conservation

Four transect lines (50 m apart, marked on the dunes) with 5 sampling points on each.

From the high tide mark, over the fore & rear dunes to the domain

# Collecting samples



On the beach



& in the bushes



Washing/cleaning  
samples

# In Ruddi's lab to sort samples



# Count & Record



Sand hoppers  
(from the beach)

Slaters

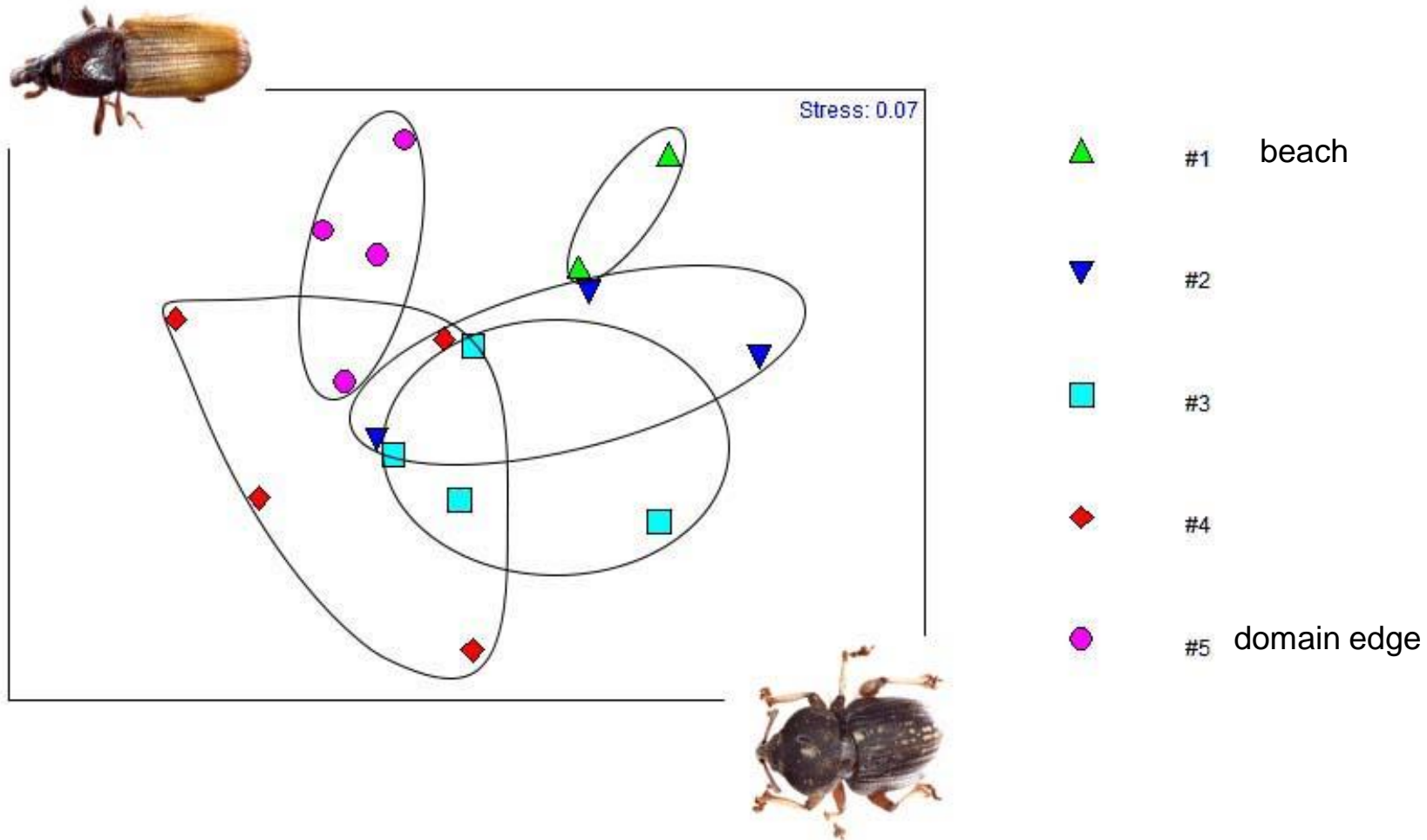


Spiders etc



# Beetle information

A multidimensional scaling plot (MDS plot) which shows sites 1 (close to sea) & 5 (near domain) have mainly beetles limited to those areas, at other sites beetle types overlap



# Other activities - Sea Week; using plant knowledge from Castlecliff



# Working with Project Crimson

- Planting trees indigenous to the area to help mitigate carbon immersions.



See us in <http://naturewatch.org.nz/projects/castlecliff-coast-care>,

available to all groups



Interesting native & introduced fauna & flora