

Te Kōhaka o Tūhaitara Trust

Dune Restoration Trust of NZ

Whitianga 2015





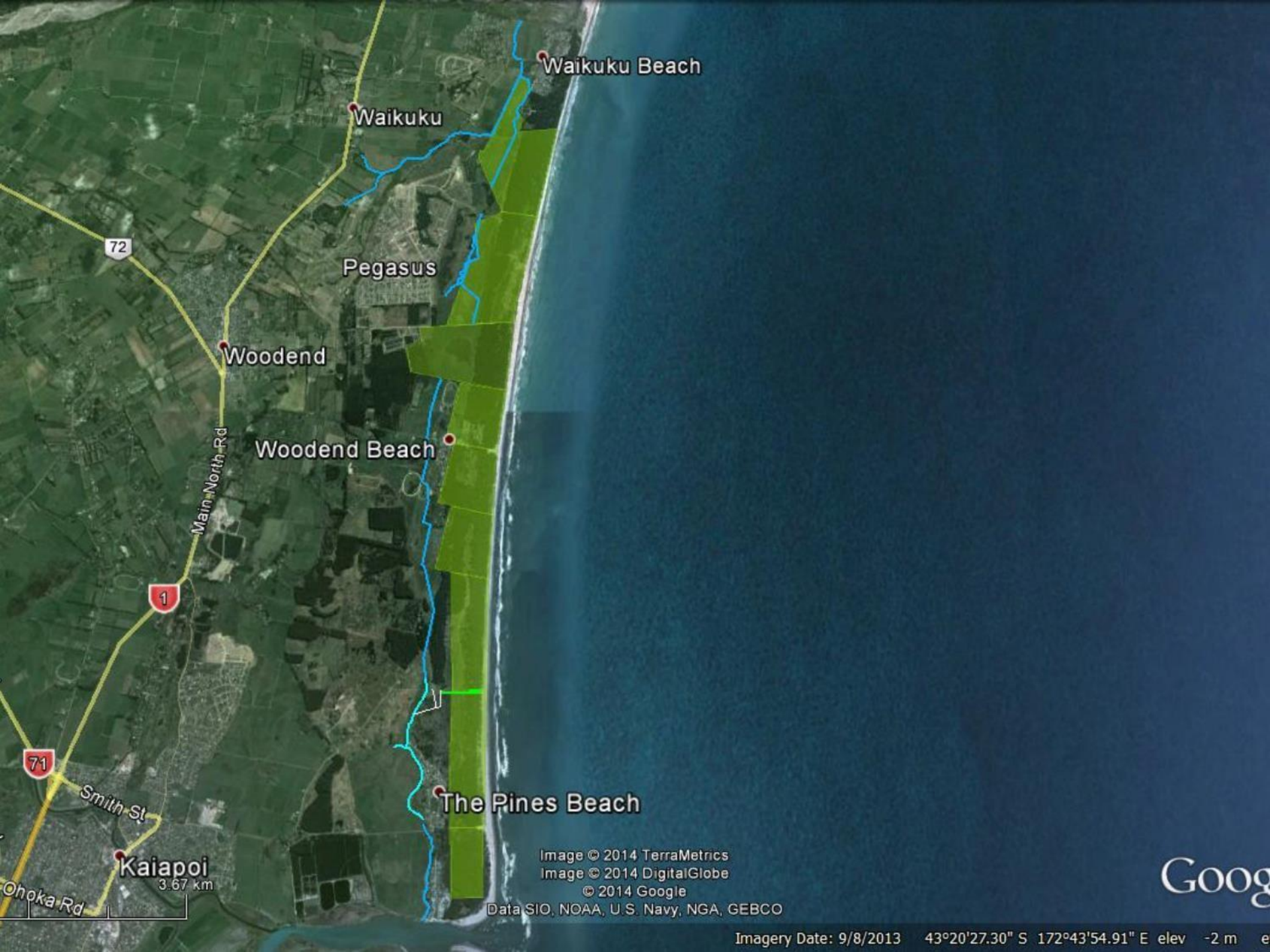


Tūhaitara Coastal Park

Te Kōhaka o Tūhaitara Coastal Park







Waikuku Beach

Waikuku

72

Pegasus

Woodend

Main North Rd

Woodend Beach

1

The Pines Beach

71

Smith St

Kaiapoi
3.67 km

Ohoka Rd

Image © 2014 TerraMetrics

Image © 2014 DigitalGlobe

© 2014 Google

Data SIO, NOAA, U.S. Navy, NGA, GEBCO

Goog

Imagery Date: 9/8/2013 43°20'27.30" S 172°43'54.91" E elev -2 m e

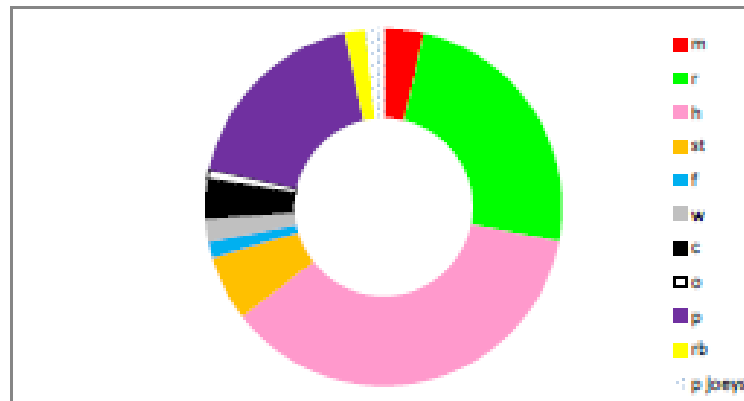
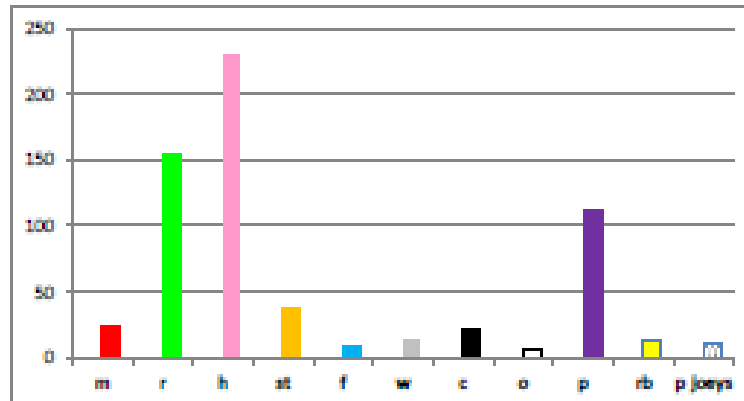
TUHAITARA COASTAL PARK

AEAPATU LAGOON & POSSUM PROJECT

ING MASTER SHEET

SPECIES	NUMBER
m	23
r	153
h	228
st	37
f	9
w	13
c	22
o	6
p	113
rb	12
p joeys	10

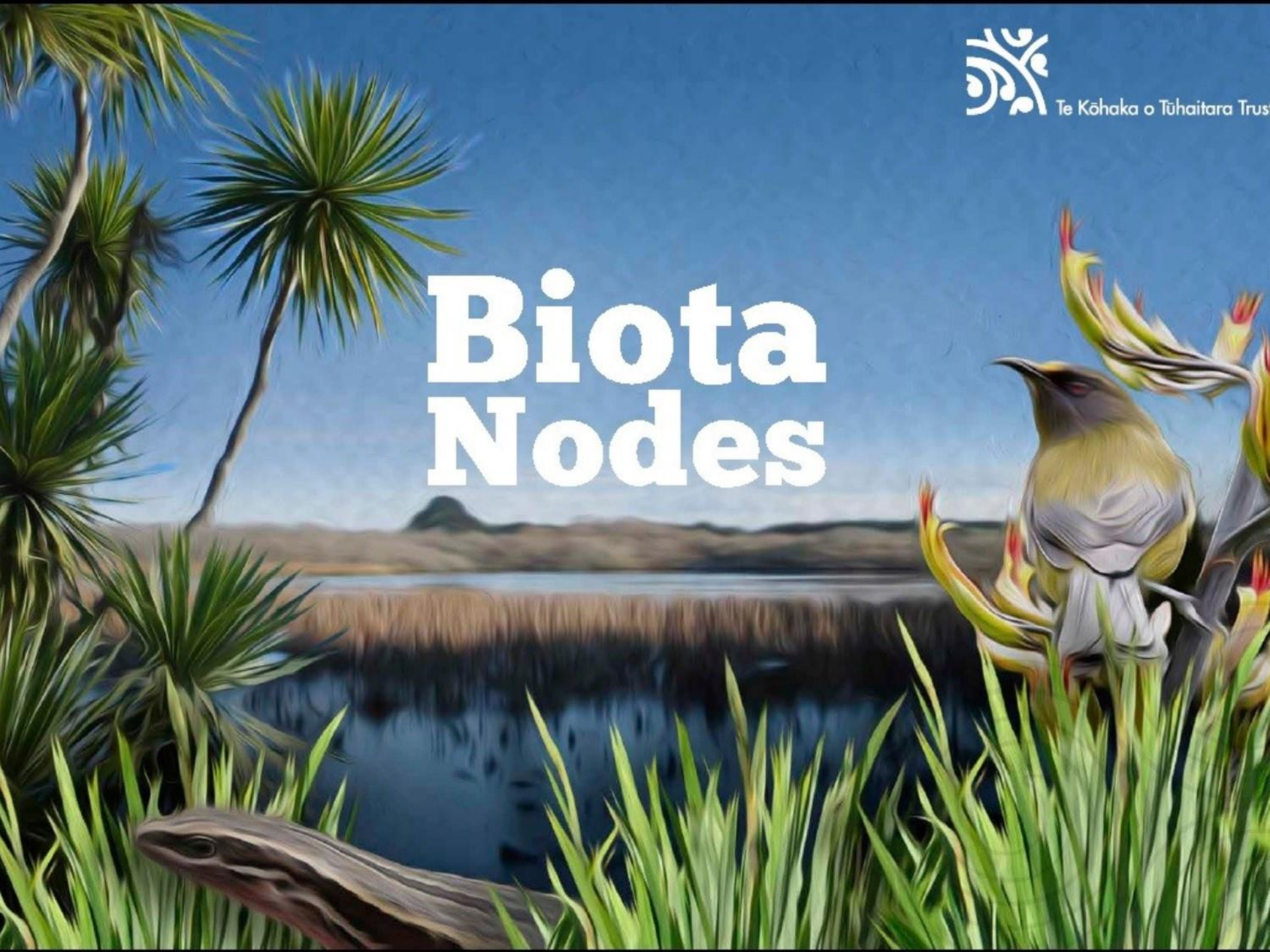
626





Te Kōhaka o Tūhaitara Trust

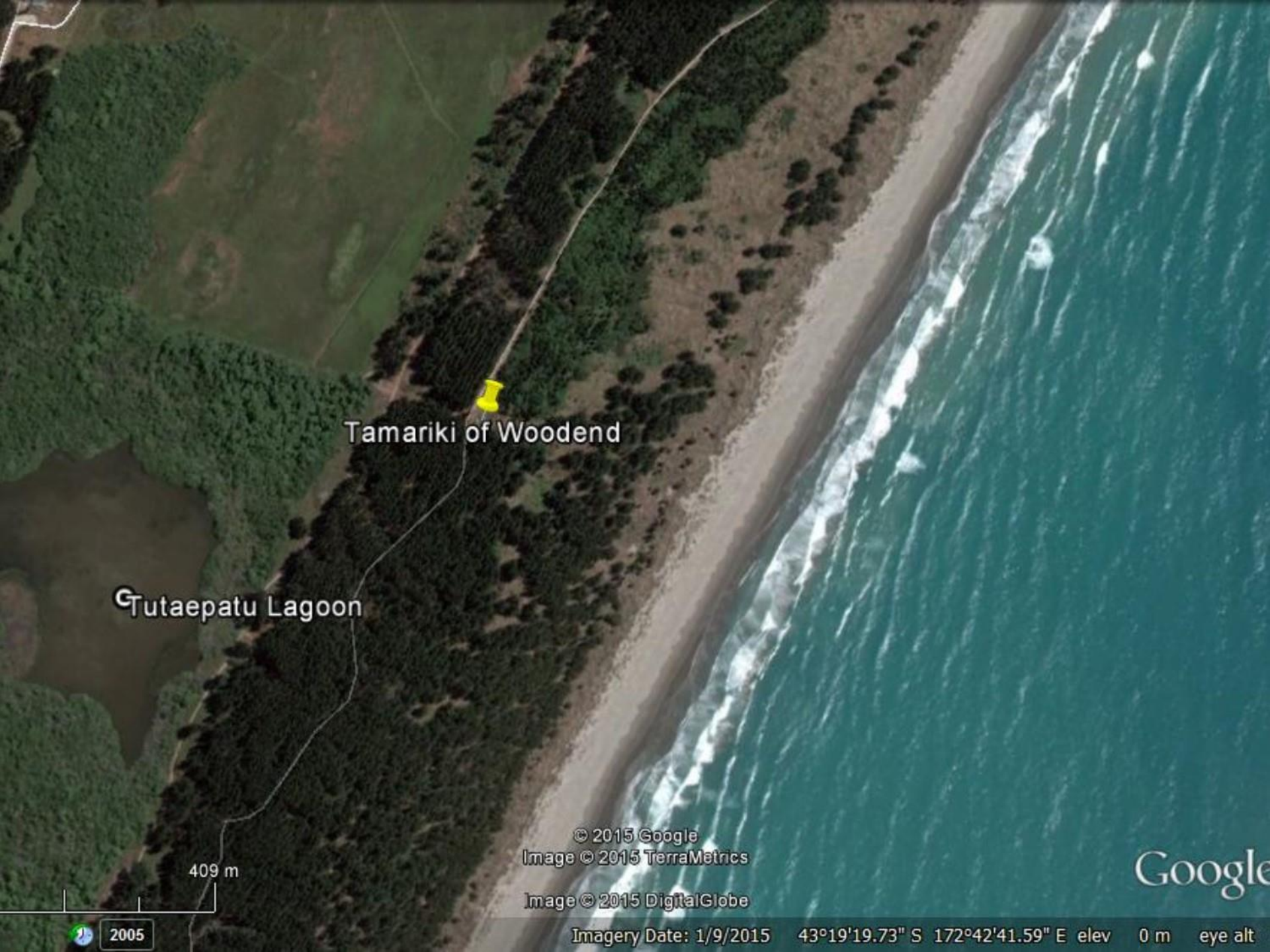
Biota Nodes











Tamariki of Woodend

Tutaepatu Lagoon

409 m

2005

© 2015 Google
Image © 2015 TerraMetrics

Image © 2015 DigitalGlobe

Imagery Date: 1/9/2015 43°19'19.73" S 172°42'41.59" E elev 0 m eye alt

Google







TAMARIKI OF WOODEND



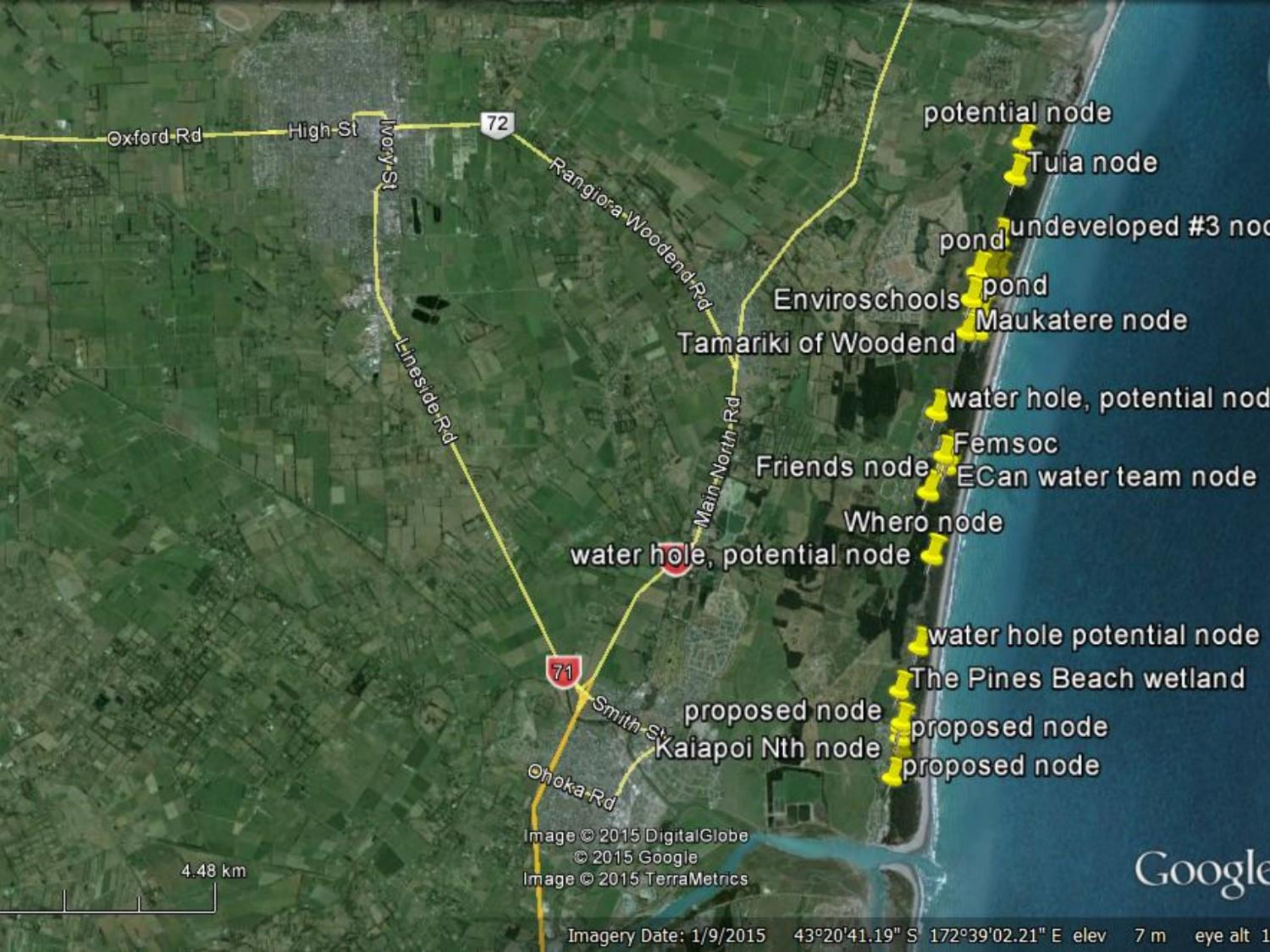
WWF











Oxford Rd

High St

Morry St

72

Rangiora Woodend Rd

Lineside Rd

Main North Rd

71

Smith St

Ohoka Rd

potential node

Tuia node

pond undeveloped #3 node

pond

Maukatere node

Enviroschools

Tamariki of Woodend

water hole, potential node

Femsoc

Friends node

ECan water team node

Whero node

water hole, potential node

water hole potential node

The Pines Beach wetland

proposed node

Kaipoi Nth node

proposed node

proposed node

Image © 2015 DigitalGlobe
© 2015 Google
Image © 2015 TerraMetrics

4.48 km

Google



NO TRAIL BIKES



NO HORSES



NO FIRES

Te Kōhaka o Tūhaitara Trust

www.tuhaitarapark.org.nz

Friends of Tuhaitara Coastal Park

03 313 1768

tkot.enquiries@farmside.co.nz

