

Dune Restoration Trust of New Zealand

National Conference, 2013

Nelson – A Region of Coastal Diversity

Conference Presentation: Nelson Region Dunes Overview

The following presentation was given by Lynne Hall-Nelson City Council, Stephen Richards-Tasman District Council and Rob Lewis-Golden Bay Coastcare. The Dunes Trust has been given permission to make this document publically available from our website. However the information and images contained in the document belong to the presenters their organisations.

To obtain permission to use the information and/or imagery used in this document for any purpose please contact lynne.hall@ncc.govt.nz or stephen.richards@tasman.govt.nz



www.dunestrust.org.nz



Nelson Region Dunes Overview



Lynne Hall - Nelson City Council

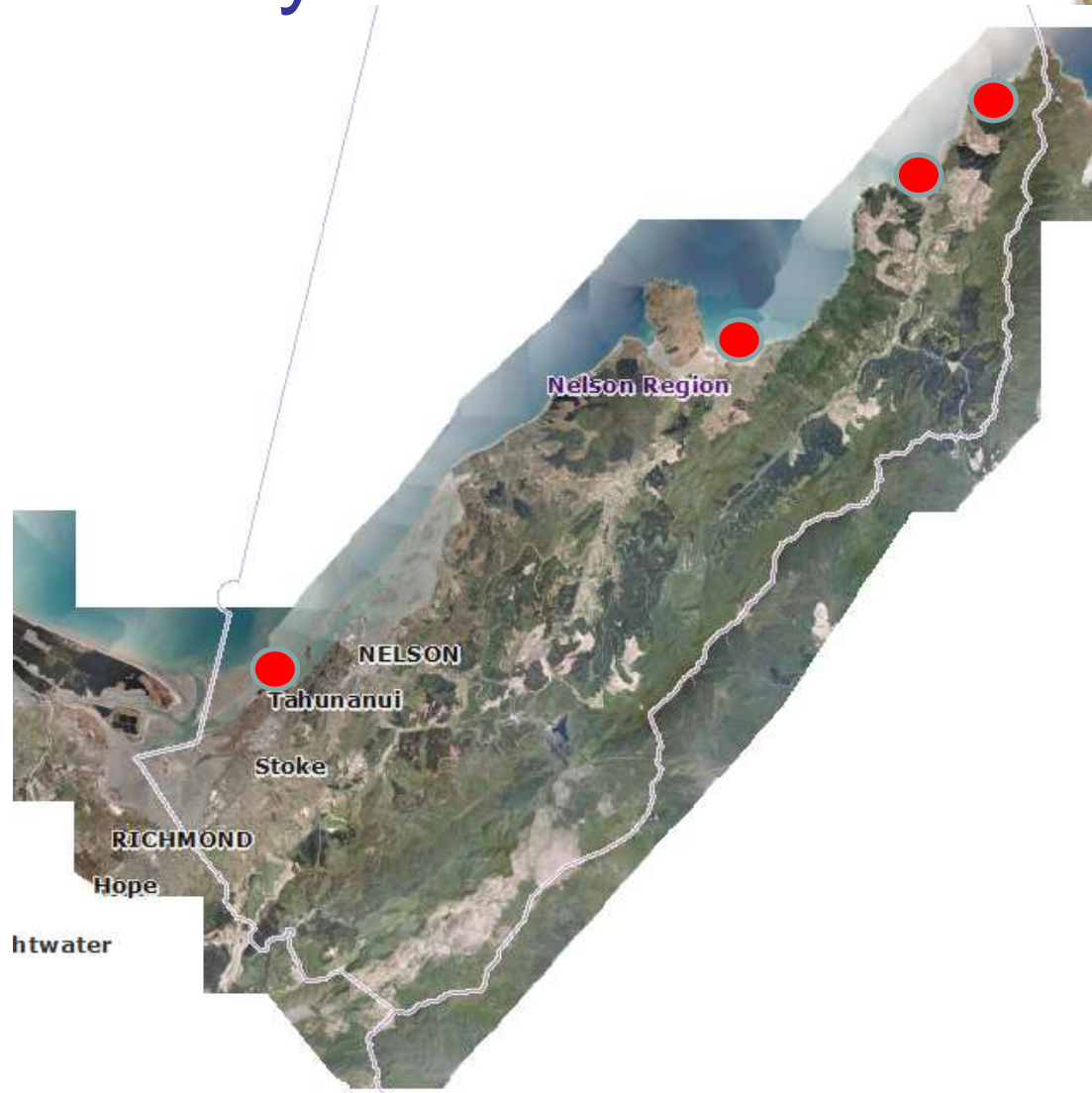
Stephen Richards – Tasman District Council

Rob Lewis – Golden Bay Coastcare

Te Tau Ihu o Te Waka a Maui Top of the South



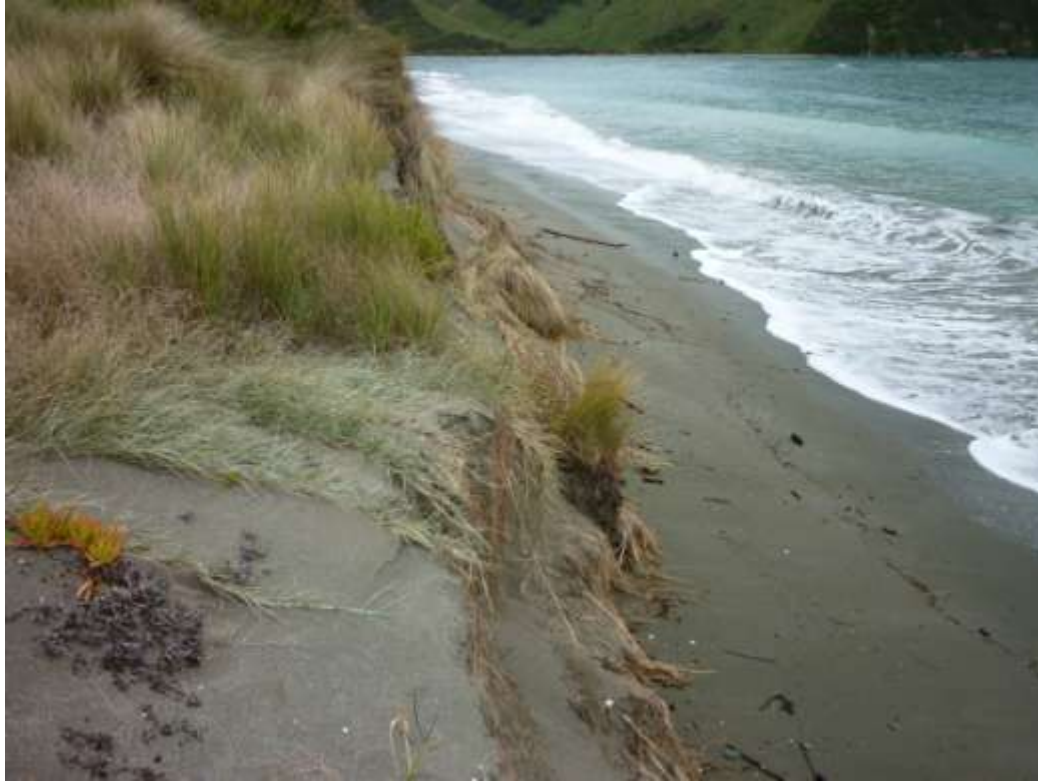
Nelson City Council Boundaries



Delaware Spit



Losing the Dunes



Losing the Dunes



Vegetation



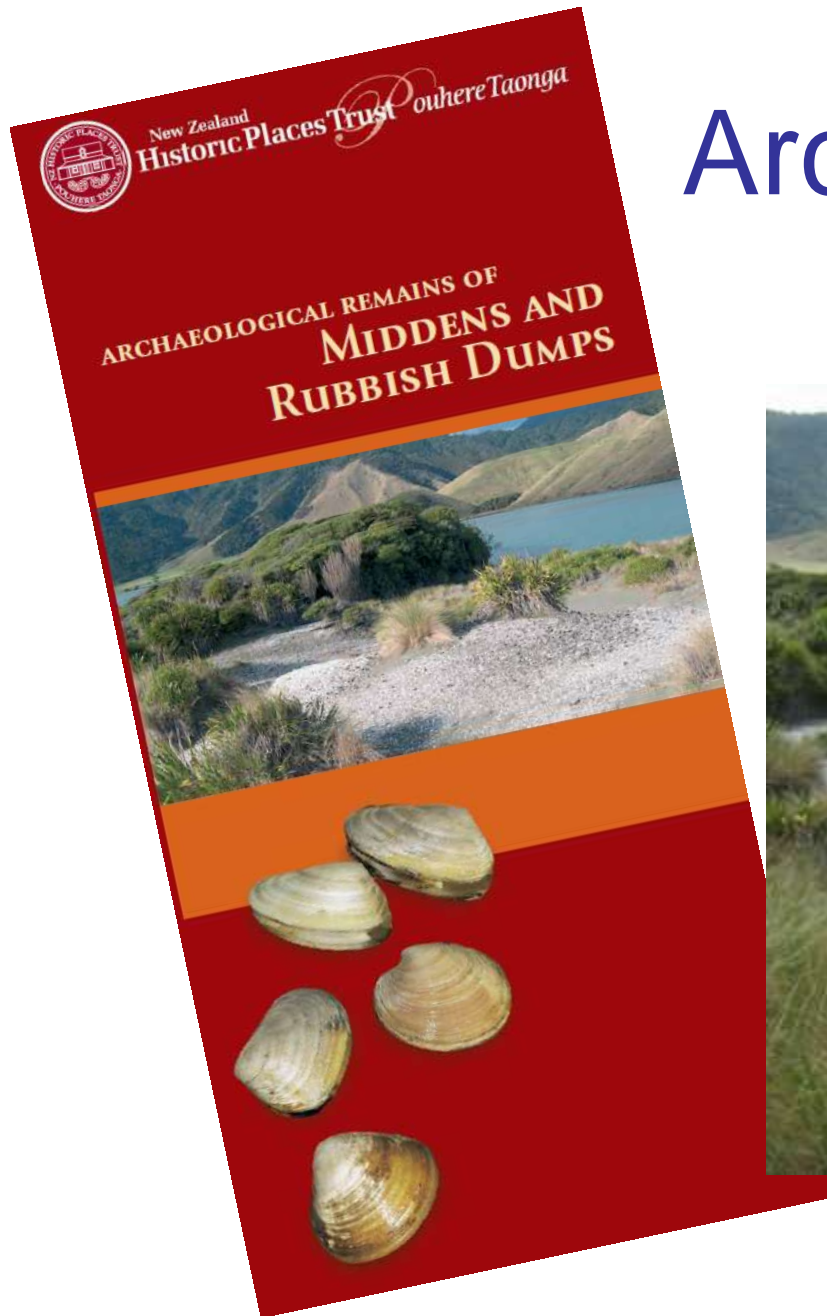
Coast care



Early History



Archaeology

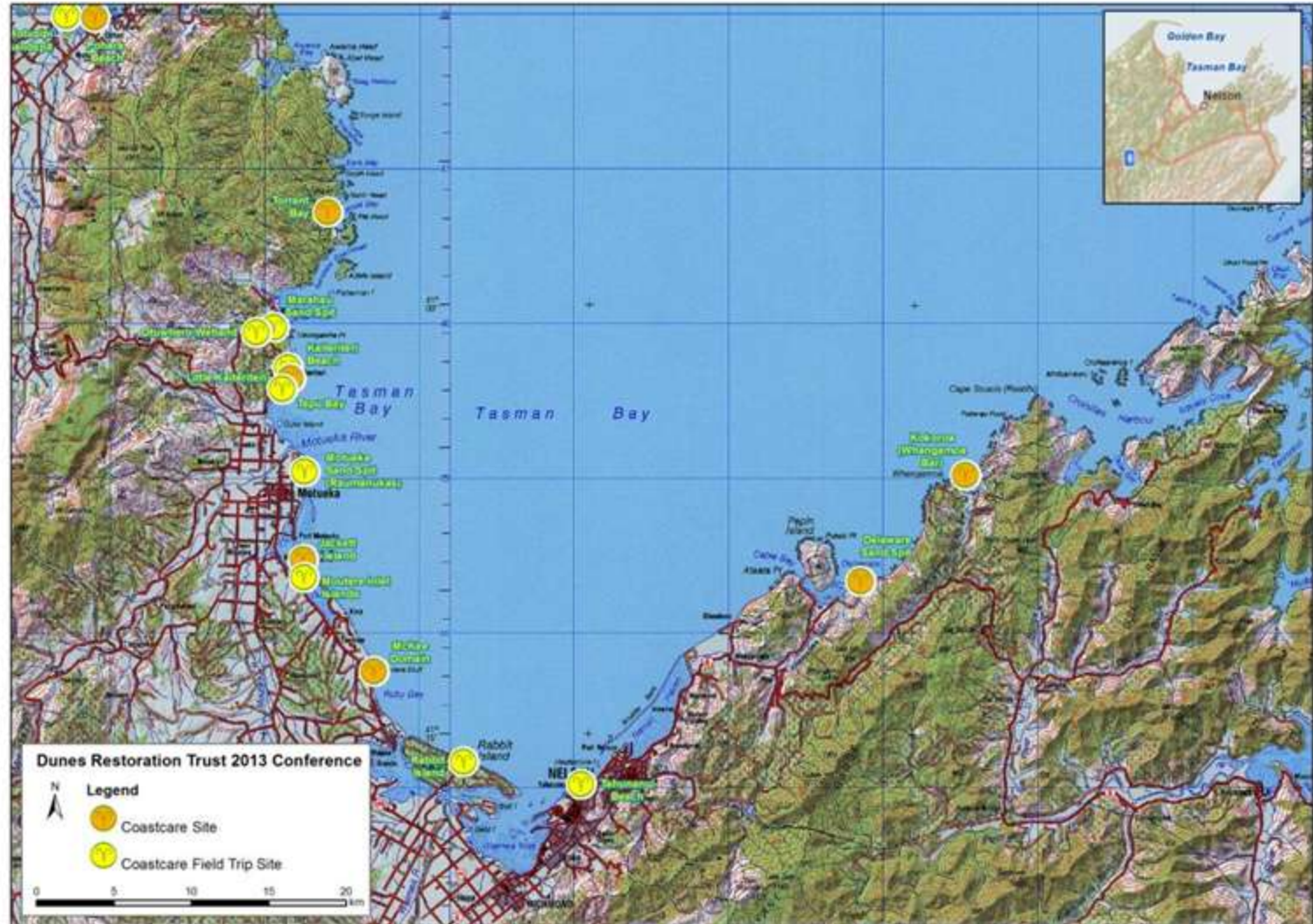


Western Tasman Bay Coastcare Sites



11 Coastcare sites between Rabbit Island and Torrent Bay

- 5 sites are led by either Doc or TDC
- 5 sites are led by community groups and supported by DOC or TDC
- 1 site is privately owned



Downloaded from Land Information New Zealand data. Crown copyright reserved. Aerial photography copyright Tasman International Limited. The information on this map is prepared for indicative use only and is not intended for definitive legal. Validity for limited reference purposes. Map printed: 18 Feb 2013



Rabbit Island- Moturoa

- 8.5 km long sandy beach
- 1.3km long beach front reserve
- 0.9 km coast care management led by TDC

Dunes Restoration Trust 2013 Conference
Rabbit Island and neighbouring islands



Reproduced from Land Information New Zealand data. Crown copyright reserved. Aerial photography copyright Terrasat International Limited. Imagery from October 2010 - April 2011. The information on this map is prepared for publication use only and is not intended for publication, sale, or other commercial purposes. Best practice 16 Feb 2013

2002

- Degraded sand dunes
- Broken beach accessways
- Beach front trees undermined
- 2003 trial plantings



- Profiling eroded dunes
- An Iwi monitor assisting while removing a section of chip seal road



2007

- Front dune re-vegetated with Spinifex and Pingao
- Beach accessways installed every 50m with signage
- Fencing removed as Spinifex growing forward



Volunteer Group 'Keep Richmond Beautiful'
- Front dune planting September 2012



June 2012

- High tide storm event eroded significant amounts of re-vegetated foredune



Mckee Memorial Recreation Reserve

- Used for picnicking and camping
- Long shore drift deposits sand and gravel eroded from nearby bluffs



2008

- Erosion over several years threatened salt water intrusion into the camping area



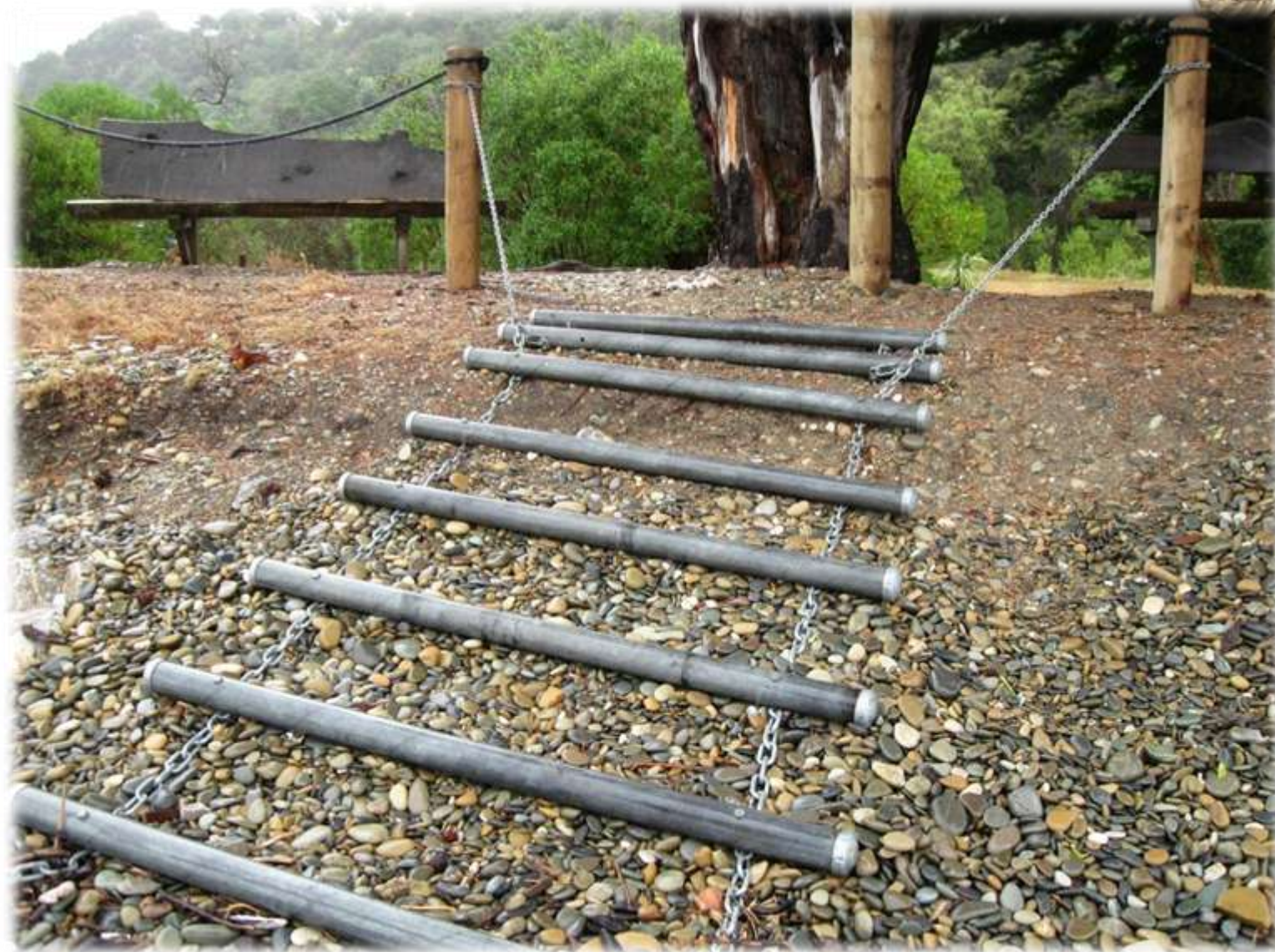
2009

- Clay bund built along reserve frontage to protect camping area
- Bund grassed before planting with Sand Coprosma, Pohuehue on the front and Ngaio along the back



10/11/2009

- Pipe access ladders installed at 6 access points



Tapu Bay

- South facing beach
- The reserve adjoins residential sections on all sides except the foreshore to the south



2010

- 3 picnic tables relocated back from foreshore edge
- Coastcare Plan developed and consultation with Community



- Importing sand to protect an exposed midden
- Partial beach renourishment protecting eroded edge



Little Kaiteriteri Beach

- Separation Point granite sand
- TDC led coastal plantings



- Works include protecting small eroded dune with fencing, plantings and accessways
- Creating view shafts through established trees



- Clearing weeds from back dune areas
Wattle, Tree Lucerne, Pampas
- Replanting with lower growing coastal natives



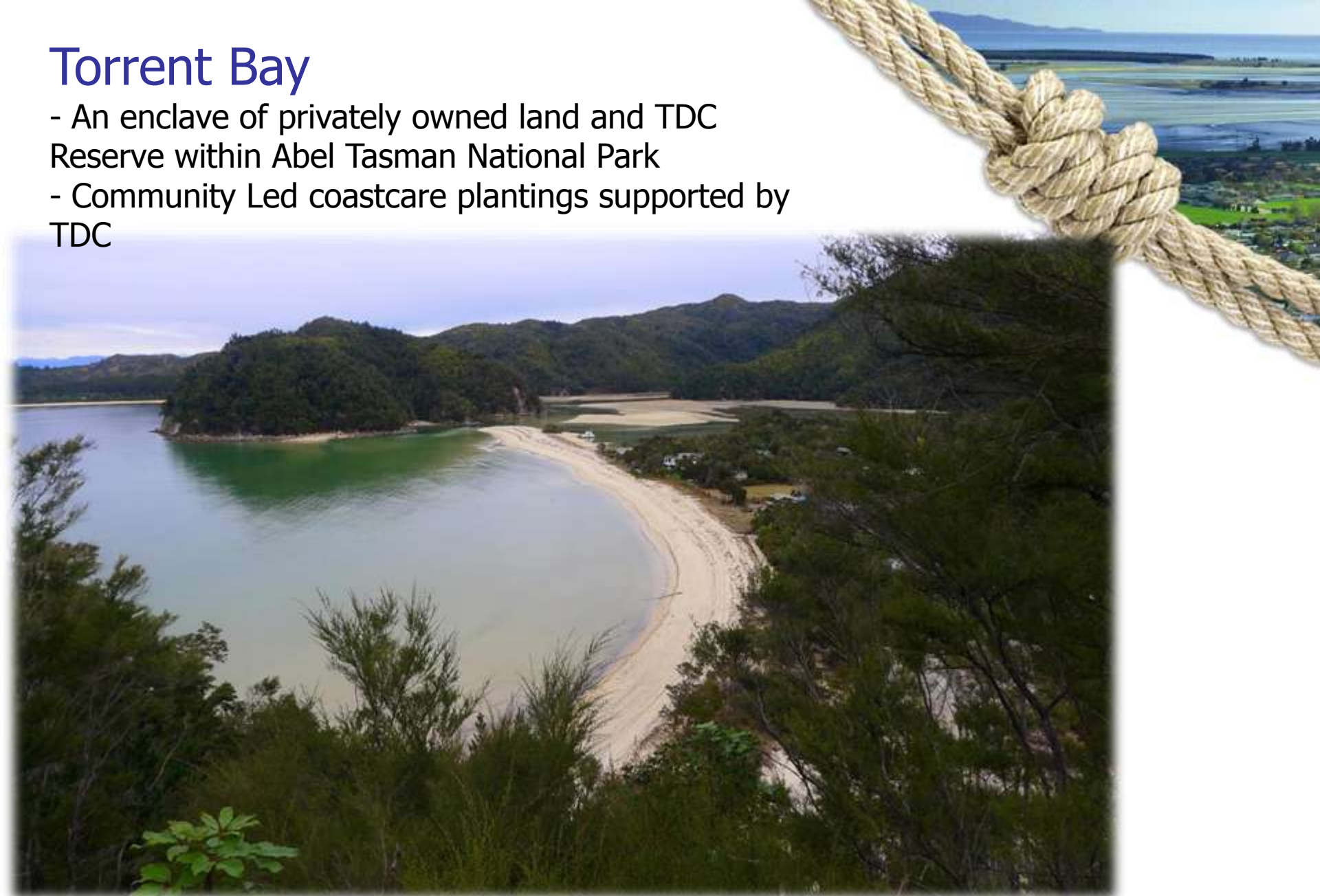
- Community planting
- Under planting areas with low coastal species



04/09/2010

Torrent Bay

- An enclave of privately owned land and TDC Reserve within Abel Tasman National Park
- Community Led coastcare plantings supported by TDC



2006

- First community working bee at front of beach reserve
- Building beach accessways
- Planting native sand binding plants



2008

- Boat access only
- Sand renourishment project followed up with Pingao and Spinifex plantings



2008

- Re-vegetating top of the beach with Pingao and Spinifex
- Posts and rope used to protect plantings from coastal walkway users



2010

- Planting pingao, spinifex, coprosma acerosa on sand spit

November 2012

- Sand spit plants establishing well



Coastcare volunteers having another tough day at the office

