

Tawharanui Open Sanctuary

A joint project with Auckland Council AC and
Tawharanui Open Sanctuary Soc. Inc. TOSSI



Restoration



1955

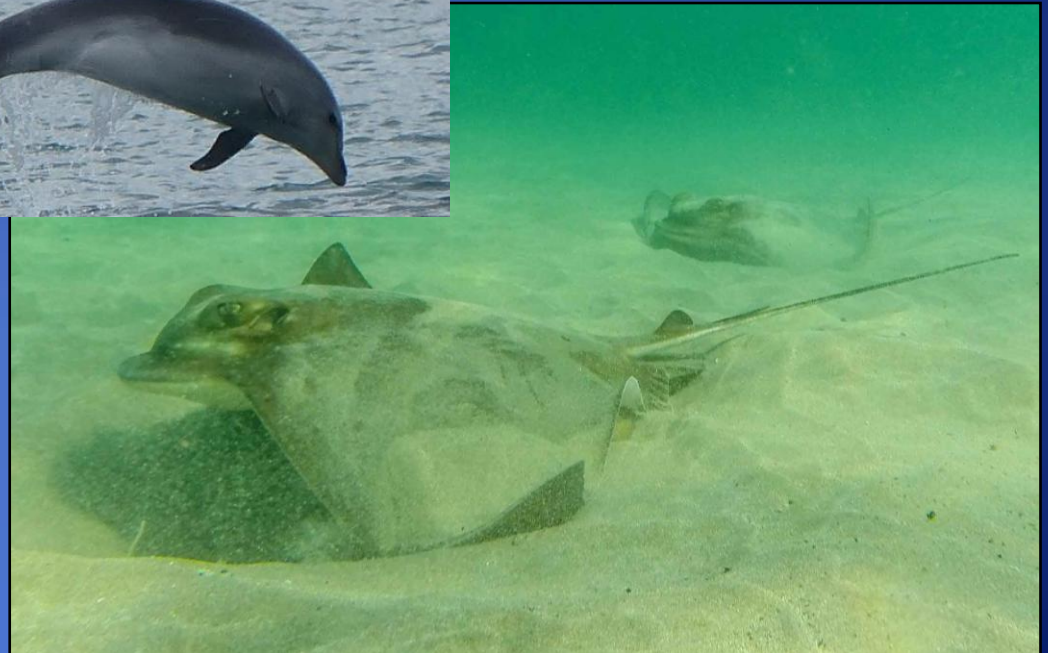
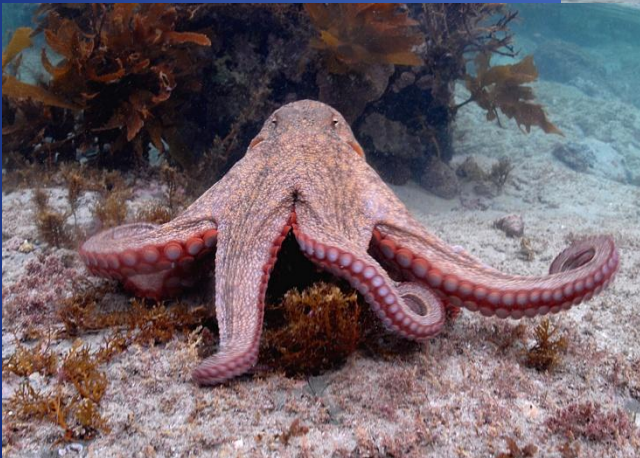
Tawharanui Open Sanctuary combines conservation, farming and recreation.

Tokatu Peninsula 2003

Marine Reserve 2011



At Tawharanui Marine Reserve helps replenish fish in the neighbouring oceans.





The vision; to create an open sanctuary where visitors can freely experience a representative range of communities that would have originally been present on Tawharanui Peninsula.

TOSSI Nursery opens 2007



Slip Gully

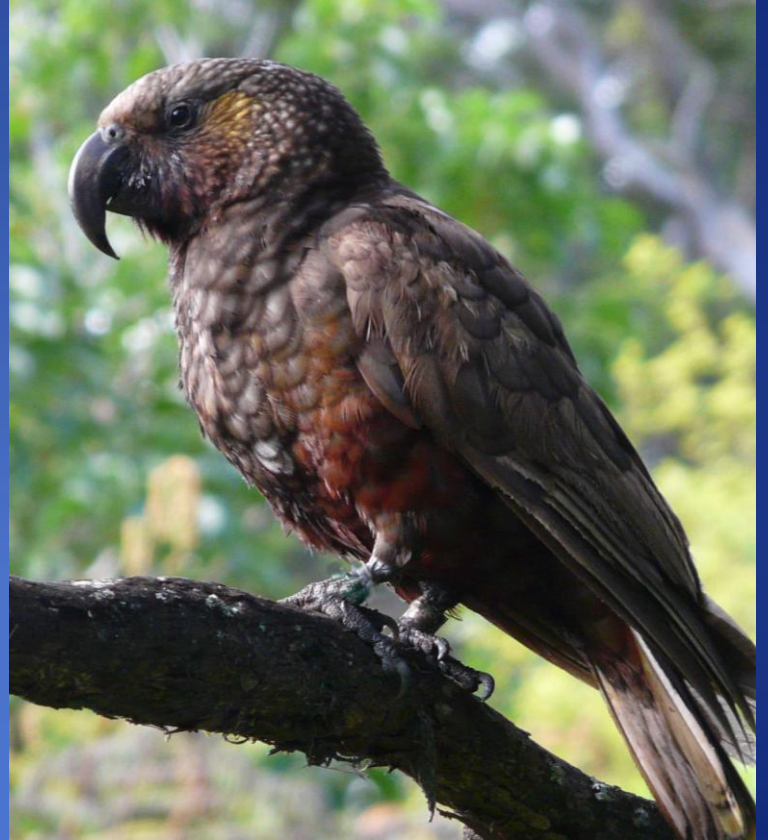
Rare NZ birds live here



No dogs. No cats. No pets.



Birds returned naturally









Birds returned to Tawharanui through permits, paperwork, funding and sheer determination!



How do returned species get to Tawharanui? Ute's, boat tenders, water taxi, helicopters, Air New Zealand, water tank and trickery!



Seabirds at Tawharanui



Grey-faced petrel



Tricked by nesting sound calls played night or day!



Gannets



Diving petrel



Fluttering Shearwater

Tawharanui Dune System



Erosion



July 2008 storms surges caused havoc to NZ dotterel sites at Anchor Bay.



Same site at Anchor Bay on a better day

Pest Proof Fence End. North Coast



2012



2010





Tawharanui



Anchor Bay
Phoenix Reef

Comet Rock

Ocean Beach

Pukenihinihi Point

Bluebell Point

Jones Bay

Photo ARC





2008



2018

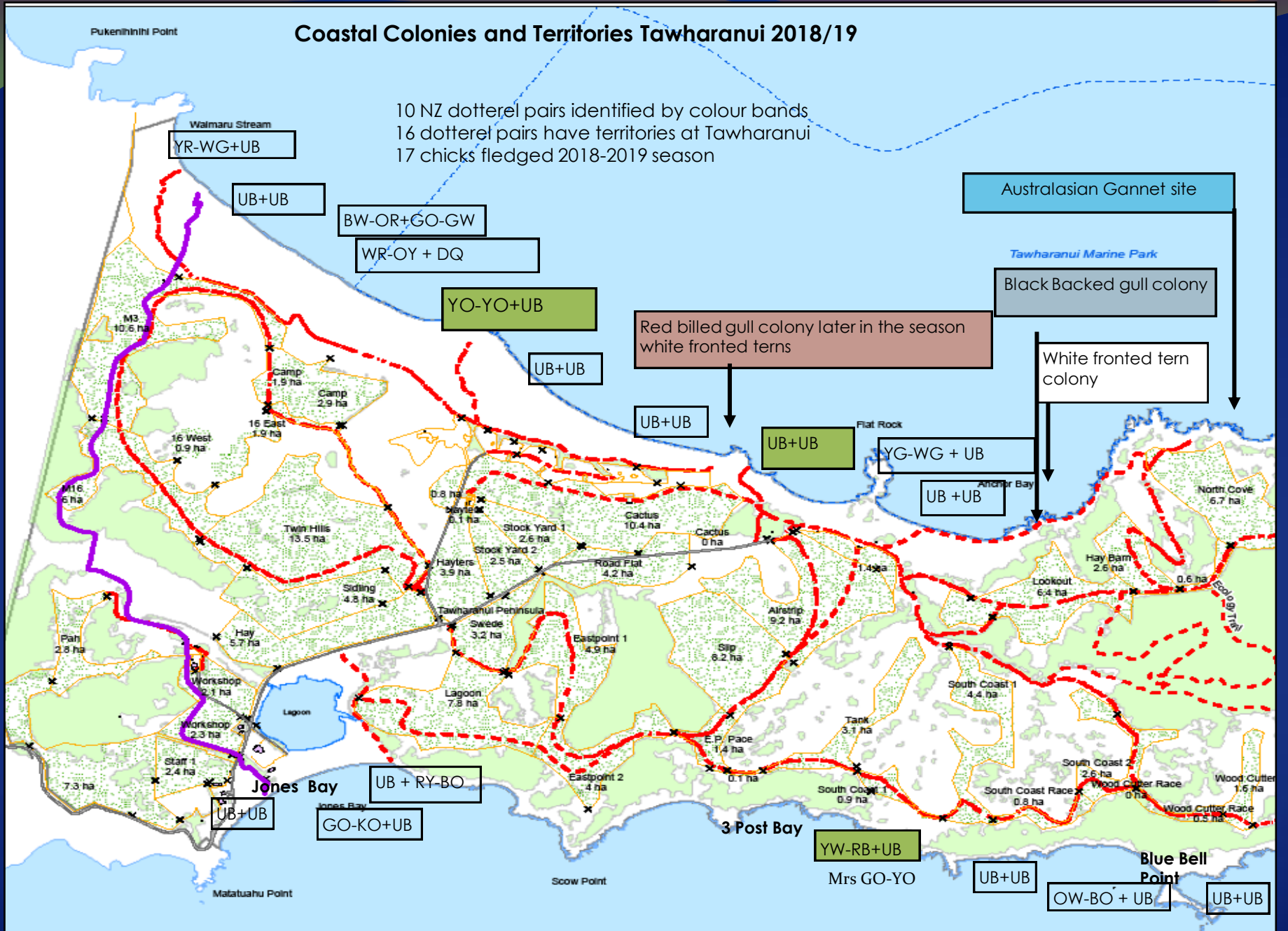




2019

Coastal Colonies and Territories Tawharanui 2018/19

10 NZ dotterel pairs identified by colour bands
 16 dotterel pairs have territories at Tawharanui
 17 chicks fledged 2018-2019 season



2017-18 season





2018-2019 season





2013



2019



Is this section of dune working?



YO-YO+UB



NZ dotterel
YW-RB known
as Mrs GO-YO
On the south
coast she has
Fledged 21 chicks
of the 137
fledged in the
last 12 years.



Mrs GO-YO
Banded 9.11.07

GO-YO



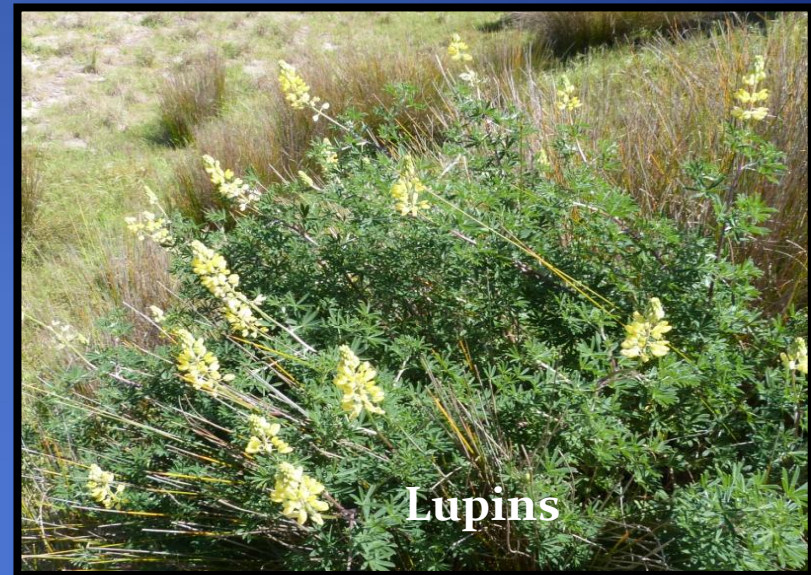
GO-KO



UB



Alien plants in the Dune Habitat





Sand Coprosma Acerosa



Maori Jasmine



Senecio ?

Sand holding dune plants





Tasmanian Ngaio

Native Ngaio



Salt burn





Tauhinu

Adapting to global warming.
NZ dotterel WR-OY and UB have a nest in the shade!

The destiny of our planet,



and it's birds, coastal shores and every part of the environment is in our hands.